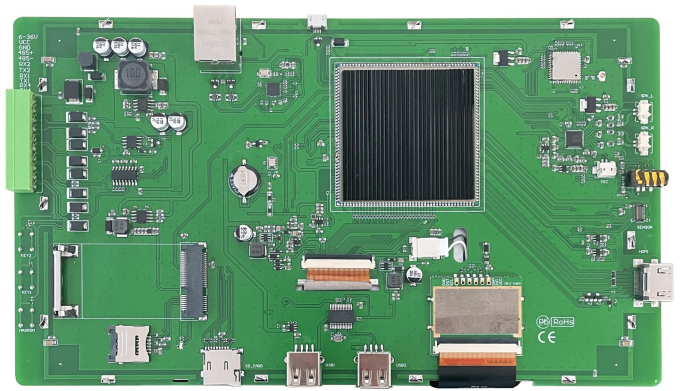
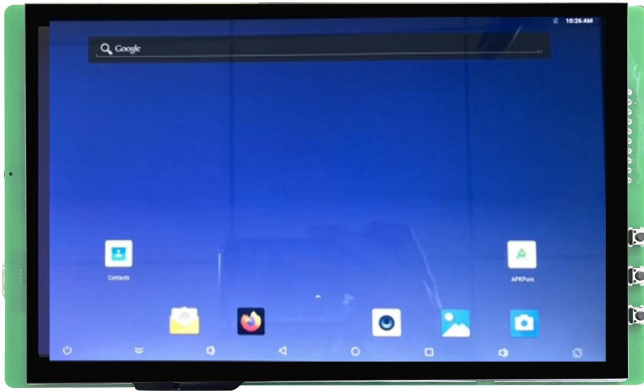


DMG10600T101_33WTC



- DMG10600T101_33WTC is an industrial Android intelligent display terminal launched by DWIN based on RK3288, running Android 8.1 OS.
- 10.1-inch, 1024*600, 16.7M colors, IPS screen, capacitive touch, Android system
- Compatible with 4G, WIFI, Bluetooth, microphone, camera and other rich peripherals.
- Available for USB and SD card updates.
- Available for downloading Android general apps to realize functions such as WiFi ,wired internet , browsing, music and video playback and data copy.
- Support RS232, RS485 and Ethernet communication with external devices.

● Master Control Parameters

Item	Description
Motherboard level	Industrial
CPU	RK3288, ARM Cortex-A17, Quad-core
CPU clock speed	1.8 GHz
FLASH	8Gbytes EMMC5.0
RAM	2Gbytes DDR3
OS	Android 8.1

Note: Support secondary development. (According to the standard Android interface development)

● Display Parameters

Item	Data	Description
Color	16.7M(16777216)colors	24 bit color 8R8G8B
LCD type	IPS	IPS process TFT LCM ,wide view angle
Viewing angle	85/85/85/85 (L/R/U/D)	Best view angle: symmetrical
Active area (A.A.)	222.72mm (W)*125.28mm (H)	1024*600
Resolution	1024*600	Support 0°/90°/180°/270°rotated display
Backlight	LED	≥30000H(Time of the brightness decaying to 50% on the condition of continuous working with the maximum brightness)
Brightness	300nit	0~100 grade (When the brightness is adjusted to 1%~30% of the maximum brightness, flickering may occur and is not recommended to use in this range)

Note: You can use dynamic screen saver wallpapers to avoid afterimages caused by fixed page display for a long time.

● Voltage & Current

Item	Conditions	Min	Typ.	Max	Unit
Power voltage	-	8.0	12.0	36.0	V
Operating current	VCC = +12V, Backlight on	-	420	-	mA
	VCC = +12V, Backlight off	-	120	-	mA

Recommended power supply: 12V 1A DC

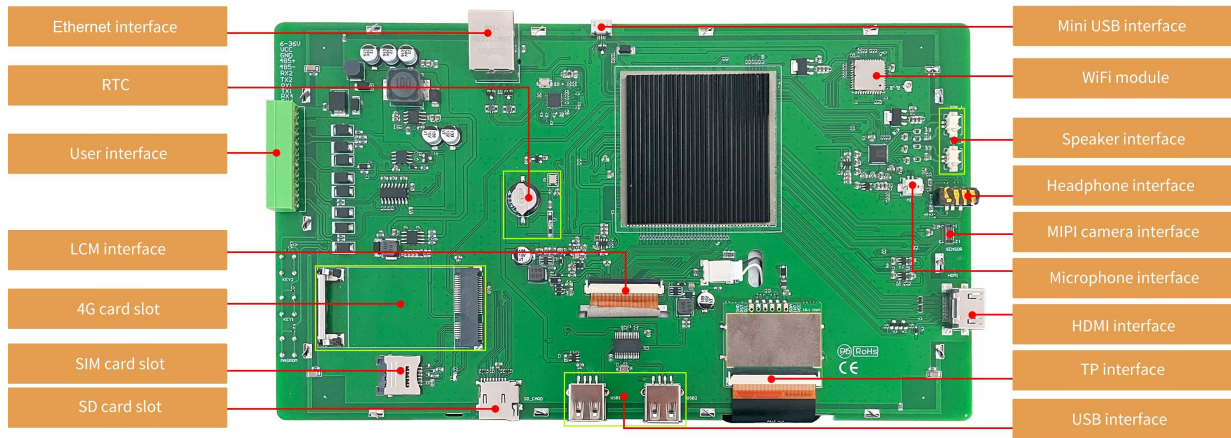
Reliability Test

Item	Conditions	Min	Typ.	Max	Unit
Working temperature	60%RH at 12V voltage	-20	25	70	°C
Storage temperature	-	-30	25	80	°C
Working humidity	25°C	10%	60%	90%	RH
ESD test	Air discharge	±8KV			
	Contact discharge	±6KV			
EFT test	GB/T17626.2-2018	2KV 100KHz			

Interface Definition

Item	Conditions	Min	Typ.	Max	Unit
UART1/4 baud rate	User Defined	2400	115200	230440	bps
UART output voltage (TXD)	Output 1	-	-13.2	-	V
	Output 0	-	13.2	-	V
UART input voltage (RXD)	Input 1	-	-13.2	-	V
	Input 0	-	13.2	-	V
UART3 baud rate	User Defined	2400	115200	921600	bps
UART output voltage level (V_AB)	Output 1	2.5	5.0	-	V
	Output 0	-	-5.0	-2.5	V
UART input voltage level (V_AB)	Input 1	0	2.5	-	V
	Input 0	-	-2.5	-0.2	V
UART mode	Support TTL/COMS, RS232 or RS485 level				
Interface cable	10Pin_3.81mm Socket				

● **Interface Description**



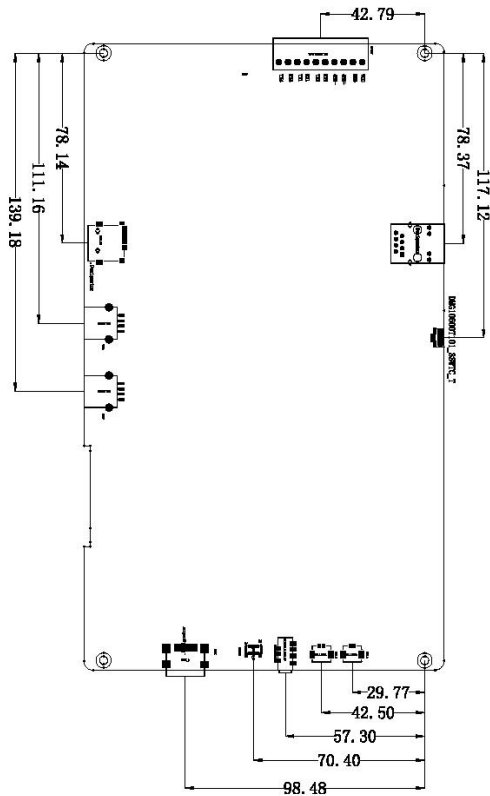
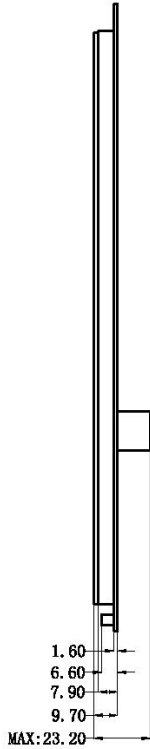
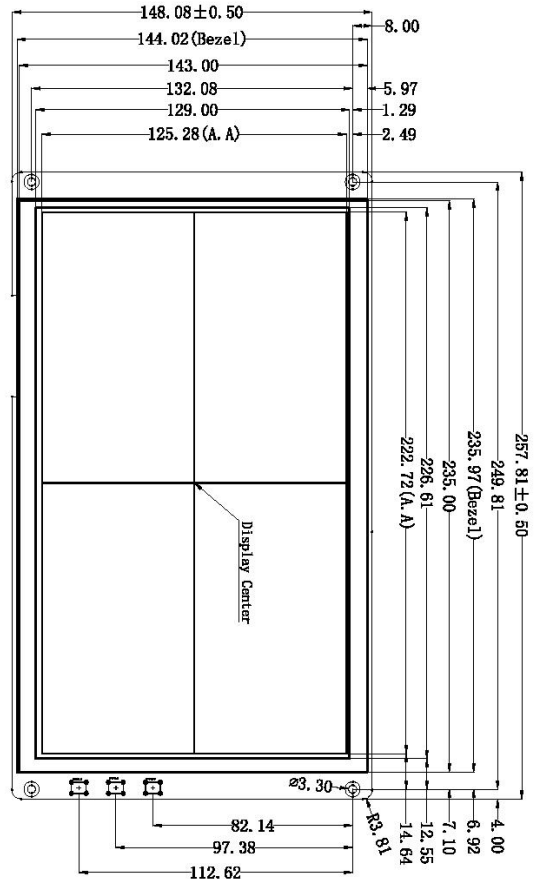
Properties	Parameters	Description
COM	2-way RS232	UART1 & UART4
	1-way RS485	UART3
	TTL/COMS	UART2(Debugging interface)
USB interface	3-way	HOST*2, OTG*1
Headphone interface	1-way	3.5mm spacing interface
Speaker interface	2-way	Left & right
Microphone interface	1-way	On board
Camera interface	1-way	Mipi & USB
SIM card slot	1-way	Drawer type card slot
SD card slot	1-way	Drawer type card slot(Max 64G)
Ethernet interface	1-way	10/100Mbps
WIFI interface	1-way	IEEE 802.11Bb/g/n,2.4G, Bluetooth
4G module	Reserved interface	Configurable for 4G module
HDMI interface	1-way	HDMI interface

● Packaging & Dimensions

Dimension				
Dimension	257.8(W)*148.1(H)*23.2(T)mm			
Net Weight	640			
Packing Capacity				
Model	Carton Size	Layer	Quantity/Layer	Quantity(Pcs)
Carton1:	220mm(L)*160mm(W)*47mm (H)	-	-	-
Carton2:	250mm(L)*200mm(W)*80mm (H)	-	-	-
Carton3:	320mm(L)*270mm(W)*80mm (H)	2	1	2
Carton4:	450mm(L)*350mm(W)*300mm(H)	1	10	10
Carton5:	600mm(L)*450mm(W)*300mm(H)	1	16	16

Disclaimer: The product design is subject to alternation and improvement without prior notice.

DWIN Technology Technical Document



Name	Pin#	IO	Description
VIN	1	P	Power Input
GND	2	O	GND
485+	3	A	485+
485-	4	B	485-
RX2	5	I	DWIN UART input
TX2	6	O	DWIN UART output
RX1	7	I	DWIN UART input
TX1	8	O	DWIN UART output
RX4	9	I	DWIN UART input
TX4	10	O	DWIN UART output

Location hole is used as position reference.
 Unmarked Tolerance is $\pm 0.3\text{mm}$
 Active area is marked in Dash lines

Model	DMG10600T101-33WTC			DWIN Technology		
Drawing	A 4	Drawn	G. Y		Date	2021.12.09
Scale	1 : 1	Reviewer			Date	
Unit	MM	Approval			Date	

● Revision records

Version	Revise Date	Content	Editor
00	2021-12-09	First Edition	ZYJ
01	2022-12-09	Properties and Package Information and Format Optimize	YML
01	2023-07-05	Modify the working voltage range	YML

Please contact us if you have any questions about the use of this document or our products, or if you would like to know the latest information about our products:

Customer service Tel: +86-400-018-9008

Customer service E-mail: dwinhmi@dwin.com.cn

Website: www.dwin-global.com

DWIN Developer Forum: <https://forums.dwin-global.com/index.php/forums>

Thank you all for continuous support of DWIN, and your approval is the driving force of our progress!