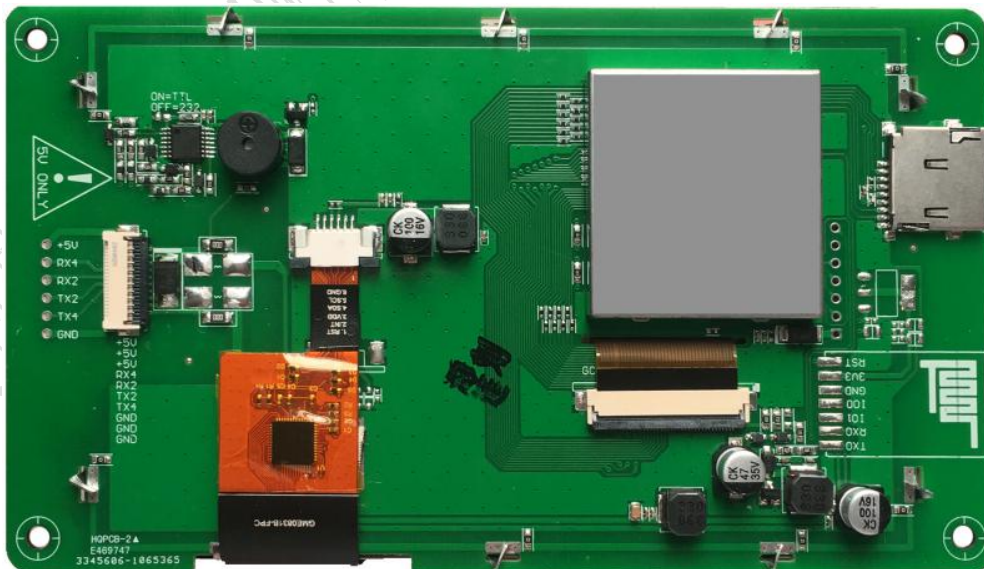


DMG80480C050_03WTC

based on T5L ASIC of 5.0 inch 800 × 480 Pixel dot matrix, 16.7M color, TN Screen

, Capacitive touch screen, standard instruction set (TA) / DGUS II System, cost-effective smart screen

Based on T5L ASIC 5.0 Inches, 800xRGBx480, 16.7M Colors, TN screen CTP , Standard instruction set (TA) / DGUS II system , Cost-Effective screen



Revision record Record of Revision

Date / Revise Date	Description / Content
2019-03-28	First release/ First Edition Modified
2019-08-22	serial port mode/Modify Interface
2019-11-26	Modify the serial port mode description/Modify Interface Description

Display performance parameters Display

parameter Item	data Parameter	Description Description
colour Color	16.7M (16777216) colors	24 bit color 8R8G8B
Display size (AA)	108.0mm (W) × 64.8mm (H)	800x480 Pixel dot matrix
Resolution Resolution	800x480	Can be set to 0°/90°/180°/270° Display mode Support 0°/90°/180°/270° rotated display
Backlight mode Backlight	led	not lower than 10000H (Work continuously at the highest brightness, the brightness is halved for the time) ≥ 10000H (Continuous working with maximum brightness, time of brightness halves)
brightness Brightness	250nit	TA Mode: Available 64 Level brightness adjustment; DGUS II mode: can enter Row 100 Level brightness adjustment (when the brightness is adjusted to the highest brightness 1%~30% Flickering may occur when it is not working, it is not recommended to use in this range) TA system:64 levels adjustment; DGUS II system:100 levels adjustmen (It's not recommend to set brightness to 1%~30% of the maximum, which may lead a flicker)

Note: more than 30 Displaying a high-contrast still image for a long period of time may cause image retention. Please add a screen saver to avoid this problem.
Note: Displaying of high-contrast still images for more than 30 minutes may result in residual images. Please add screen saver to avoid this problem.

Electrical performance parameters Voltage & Current

parameter Item	Test Conditions Conditions	Minimum	Typical value	Max	unit
Operating Voltage Power Voltage	-	4.5	5.0	5.5	V
Working current Operation Current	VCC = +5V , The backlight brightness is maximum VCC = +5V, Backlight on	-	240	-	mA
	VCC = +5V , The backlight is off VCC = +5V, Backlight off	-	70	-	mA

Recommended power supply: 5V 1A DC power supply
Recommended power supply: 5V 1A DC

Working environment and reliability parameters Reliability Test

parameter Item	Test Conditions Conditions	Minimum Min	Typical value Typ	Max Max	unit Unit
Operating temperature Working Temperature	5V Under voltage, humidity 60% 60%RH at 5V voltage	-20	25	70	°C
Storage temperature Storage Temperature	-	-30	25	85	°C
Working humidity Working Humidity	25 °C	10%	60%	90%	RH
Three prevention treatment Protective Paint	-	-	no None	-	-

Interface performance parameters Interface

parameter Item	Test Conditions Conditions	Minimum Min	Typical value Typ	Max Max	unit Unit
Serial port baud rate Baudrate	User-defined (hardware profile setting) User Set	3150	115200	3225600	bps
Serial output level Output Voltage (TXD)	Output 1, Iout = -4mA	4.78	5.0	-	V
	Output 0, Iout = 4mA	-	-	0.4	V
Serial input level Input Voltage (RXD)	Input 1	2.5	5.0	-	V
	Input 0	-	-	1.0	V
Serial mode Interface	UART2 : Serial port level selection jumper selection(The default is RS232 mode) ON=N81, 3.3V&5V TTL/COMS ; OFF=N81,RS232 Compatible interface. UART4 : N81/E81/O81/N82 Four modes are available, serial port level selection jumper selection: (OS Can be used after configuration) ON=N81/E81/O81/N82, 3.3V&5V TTL/COMS ; OFF=N81/E81/O81/N82, ,RS232 Compatible interface. UART2 : Mode is determined by Jumper :(Default to RS232 mode) ON=N81, 3.3V&5V TTL/COMS ; OFF=N81,RS232. UART4 : Mode is determined by Jumper :(be used after OS configuration) ON=N81/E81/O81/N82, 3.3V&5V TTL/COMS ; OFF=N81/E81/O81/N82,RS232.				

User interface mode Socket	10Pin_1.0mm FCC Seat 10Pin_1.0mm FCC Socket
USB interface	no None
SD Card interface Slot	Have(SDHC/ FAT32 format) YES (SDHC/FAT32 Format)

Memory characteristics Memory

Memory category Item	Typical value Typical value	Features Features	Typical value Typ value	unit Unit	Description Description
FLASH Memory (TA/DGUS II system General)	16Mbytes	Font storage space Space of Font	4-12	Mbytes	Single font 256Kbytes, Store fonts, Icon library and other binary files. A single font of 256Kbytes,store font, icon libraries,and other binary files
		Picture storage space (.ICL file) Picture Storage (. ICL file)	12-4	Mbytes	JPEG Picture storage format, (picture storage number Volume and customers JPEG The picture size is related, single JPEG The size of the picture file is not To exceed 256Kbytes) JPEG format(Picture quantity relate to JPEG size , size of a single JPEG image file should not exceed 256Kbytes)
RAM Memory (DGUS II)	128Kbytes	Variable storage space Variable Storage Space	/	/	Don't save when power off Data is not saved when power down
Nor Flash Memory (DGUS II)	320Kbytes	User database User database	/	/	Power-down save Data is saved when power down

UI and peripheral support UI & Peripheral

UI And peripherals UI & Peripheral	
UI version UI Version	TA / DGUS II (factory pre-installed DGUS II) TA / DGUS II (DGUS II pre-installed)
Support peripherals Peripheral	Support capacitive touch screen, buzzer Capacitance touch screen, Buzzer

Packaging and physical dimensions Packing Capacity & Dimension

size Dimension				
Dimensions Dimension	143.5(W) × 80.9(H) × 15.8(T) mm			
Net Weight Net Weight	155g			
Packing standard Packing Capacity				
Packing box model Model	Packing box size Size	Number of layers (layers) Layer	Quantity/layer (slice) Quantity/Layer	Total quantity (pieces) Quantity(Pcs)
1 Number box Carton1 :	220mm(L) × 160mm(W) × 47mm (H)	1	1	1
2 Number box Carton2 :	250mm(L) × 200mm(W) × 80mm (H)	2	2	4
3 Number box Carton3 :	320mm(L) × 270mm(W) × 80mm (H)	2	4	8
4 Number box Carton4 :	450mm(L) × 350mm(W) × 300mm(H)	not applicable none	not applicable none	not applicable none
5 Number box Carton5 :	600mm(L) × 450mm(W) × 300mm(H)	2	50	100

Remarks: Does not affect performance parameters and product design changes used without notice.

Remark: There is no extra-notice if the product design changes that do not affect performance parameters and use.

