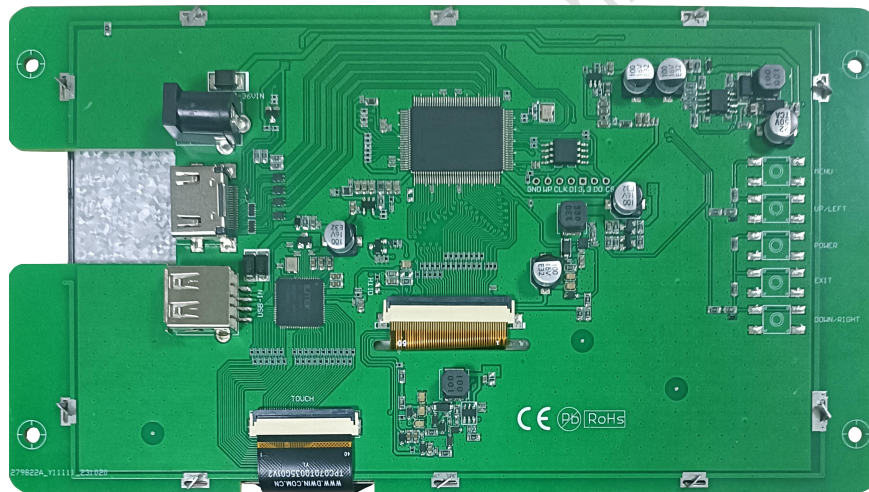


# HDW070\_008LZ05

**7 Inch, 1024\*RGB\*600, 16.7M Colors, IPS screen, High  
brightness 600nit, Capacitive touch panel, HDMI interface display**



Note: The physical picture is a left and right flip picture.

Disclaimer: The product design is subject to alternation and improvement without prior notice.

## ● Display

Item	Parameter	Description
Color	16.7M(16777216)colors	24 bit color 8R8G8B
Panel Type	IPS	IPS TFT LCM, wide viewing angle
Viewing Angle	85/85/85/85 (L/R/U/D)	Best View: symmetrical
Active Area(A.A.)	154.08mm(W) * 85.92mm(H)	1024*600
Resolution	1024*600	Support 0°/90°/180°/270°rotated display
Backlight	LED	≥20000H (Continuous working with maximum brightness, time of the brightness decays to 50%)
Brightness	600nit	-

Note: You can use dynamic screen saver wallpapers to avoid afterimages caused by fixed page display for a long time.

## ● Voltage & Current

Item	Description	
Power Voltage	7~36V, typical value of 12V	
Current Parameters	600mA	VCC=7V(Minimum starting voltage)
	370mA	VCC=12V (Standard supply voltage)
	170mA	VCC=36V (Maximum supply voltage)

Recommended power supply: 12V 1A DC

## ● Reliability Test

Item	Conditions	Min	Typ	Max	Unit
Working Temperature	60%RH at 12V voltage	-20	25	70	°C
Storage Temperature	-	-30	25	80	°C
Working Humidity	25°C	10%	60%	90%	RH

## ● Interface

Item	Description
Socket	Power interface, HDMI interface
USB Interface	Yes (Connect USB Capacitive touch screen)
SD Card Slot	None

## ● Peripheral

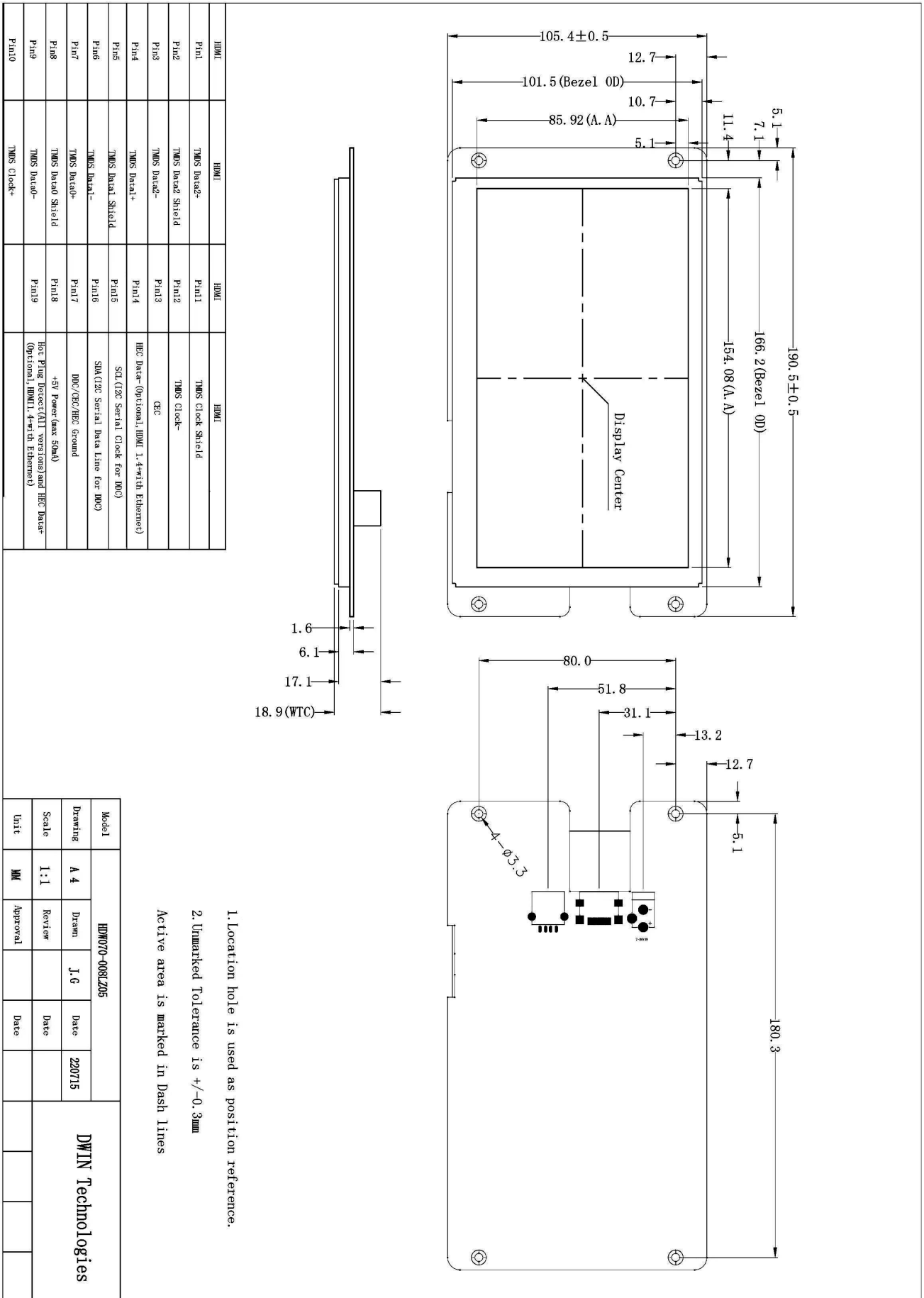
Peripheral	Capacitive touch panel
------------	------------------------

● **Packing Capacity & Dimension**

Dimension				
Dimension	190.5(W)*105.4(H)*18.9(T)mm			
Net Weight	250g			
Packing Capacity				
Model	Size	Layer	Quantity/Layer	Quantity(Pcs)
Carton1:	220mm(L)*160mm(W)*47mm(H)	-	-	-
Carton2:	250mm(L)*200mm(W)*80mm(H)	2	1	2
Carton3:	320mm(L)*270mm(W)*80mm(H)	2	2	4
Carton4:	450mm(L)*350mm(W)*300mm(H)	1	20	20
Carton5:	600mm(L)*450mm(W)*300mm(H)	1	34	34

Disclaimer: The product design is subject to alternation and improvement without prior notice.

DWIN Technologies Technical Document



1. Location hole is used as position reference.  
 2. Unmarked Tolerance is +/-0.3mm  
 Active area is marked in Dash Lines

Model	HDW070-008LZ05		
Drawing	A 4	Drawn	J.G
Scale	1:1	Reviewer	
Unit	MM	Approval	
		Date	220715
		Date	
		Date	

DWIN Technologies

**Record of Revision**

Ver	Revise Date	Content	Editor
00	2022-12-08	First Edition	Kaya
01	2023-12-04	IC scheme change, update physical image	YML

Please contact us if you have any questions about the use of this document or our products, or if you would like to know the latest information about our products:

Customer service Tel: +86-400-018-9008

Customer service E-mail: [dwinhmi@dwin.com.cn](mailto:dwinhmi@dwin.com.cn)

Website: [www.dwin-global.com](http://www.dwin-global.com)

DWIN Developer Forum: <https://forums.dwin-global.com/index.php/forums>

Thank you all for continuous support of DWIN, and your approval is the driving force of our progress!

DWIN Technologies Technical Document