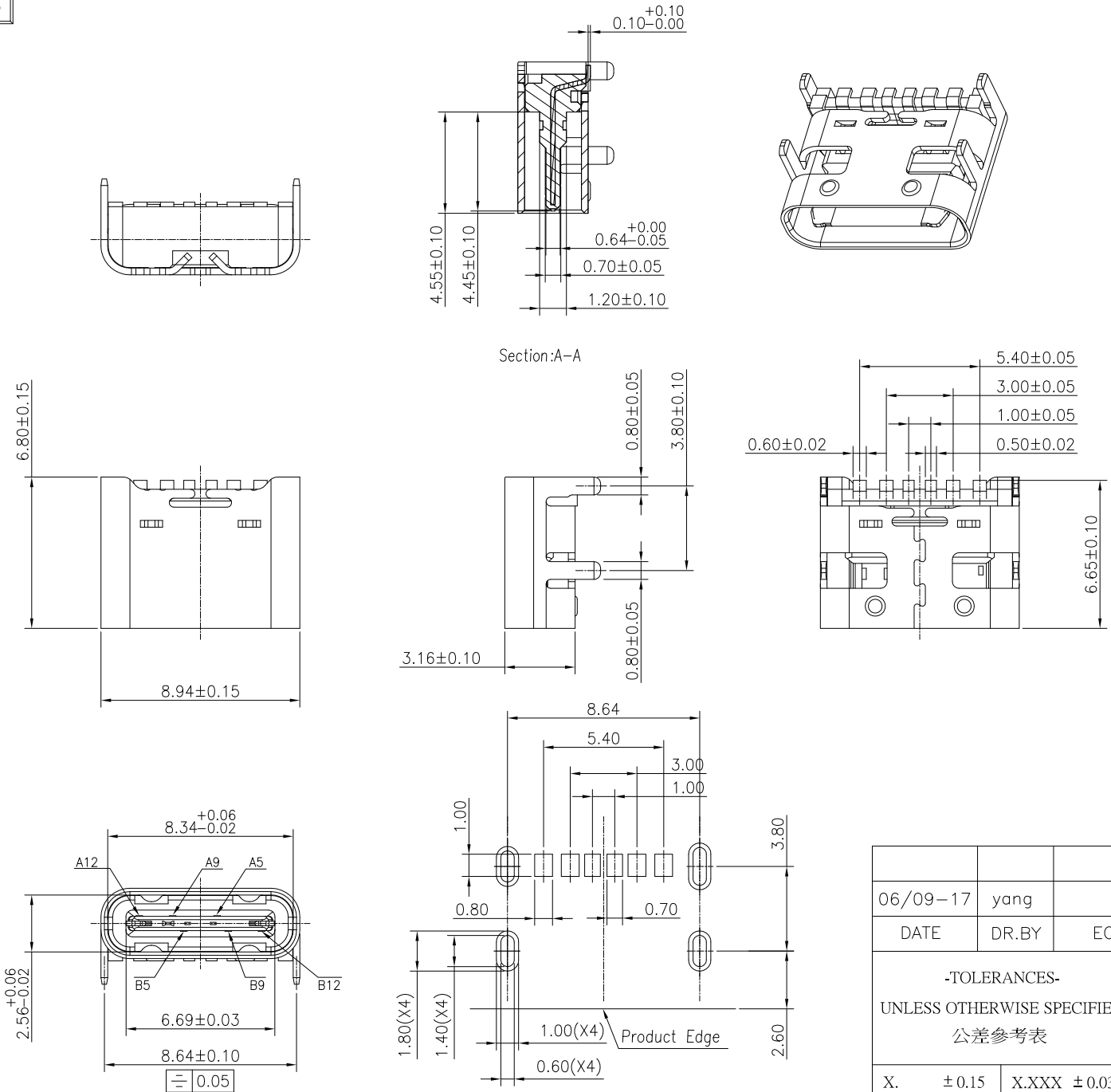



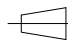
Specification:

1. Electrical Characteristics:
 Contact Current Rating: 3 Amperes Max.
 Rated Voltage: 30V Max.
 Dielectric Withstanding Voltage: AC 100V r.m.s.
 Insulation Resistance: 100 MΩ Minimum.
 Contact Resistance: 40 mΩ Maximum.
2. Environmental:
 Operating Temperature: -40°C~+85°C.
3. Mechanical Characteristics:
 Insertion Force: 5~20Nf.
 Withdrawal Force: 6~20Nf.
 Durability Cycles: 10000 Cycles.
4. (xx) Make is FAI test Dimension
 ▼ Make is major test Dimension

A5	CC1	B5	CC2
A9	VBUS	B9	VBUS
A12	GND	B12	GND
PIN	SIGNAL NAME	PIN	SIGNAL NAME



RECOMMENDED P.C.B. LAYOUT
 TOLERANCE UNSPECIFIED ±0.05mm

06/09-17	yang		NEW-DWG		AO
DATE	DR.BY	ECN.NO.	DESCRIPTION	MARK	VER.
-TOLERANCES- UNLESS OTHERWISE SPECIFIED					
公差参考表			 	TITLE: USB TYPE C 6Pin 母头成品 普通型	
X.	± 0.15	X.XXX ± 0.03	APPD:	PRODUCT NO:	
X.X	± 0.10	X.X° ± 1.00°	CHECK:	DATE	SCALE UNIT TYPE PAGE
X.XX	± 0.05	X.XX° ± 0.50°	DRAW:	2017.06.09	1:1 mm CD 1/1